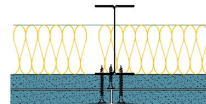
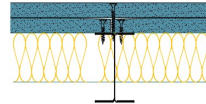


TWI70-B-60(2x50)(210) - SPEEDLINE System Data Sheet - Version V1 (24-10-23)

Twin SPEEDLINE 70mm 'I' Stud Partition @600mm Ctrs, with 2x BG Gyproc 15mm SoundBloc each side, 50+50mm APR



System Performance Breakdown

Fire Resistance:

BS476 Part 22:1987:

Test Ref & Date or Applied Ref & Report:

Max Height:

Thickness:

Duty Grade: BS 5234: Part 2:1992:

Sound Insulation:

90/90 Minutes (Integrity/Insulation).

BTC 17440F - BRE Report P102396-1011A

Refer to Speedline Specification Clause

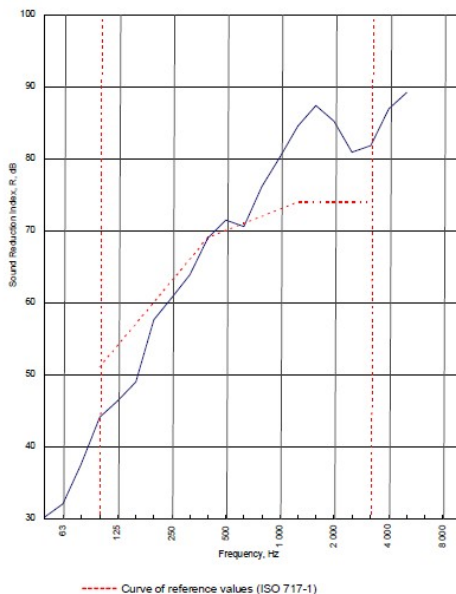
210 mm. (At Base Track, Excluding Finishes)

Severe - Annexes A-F

70 R_w dB, -10 C_{tr} Date Tested or Assessed Against - TWI50-B-60(2x50)(200)

Test Code:	H17568AA
Test Date:	01/09/2011

Freq. Hz	R dB
50	30.2
63	32.0
80	37.5
100	44.1
125	46.3
160	48.9
200	57.6
250	60.7
315	63.9
400	69.0
500	71.5
630	70.6
800	76.2
1 000	80.2
1 250	84.5
1 600	87.4
2 000	85.2
2 500	80.9
3 150	81.8
4 000	86.9
5 000	89.2
6 300	
8 000	
10 000	



Rating according to BS EN ISO 717-1:1997	R_w (C;Ctr) = 70 (-3;-10) dB		
Evaluation based on laboratory measurement results obtained by an engineering method:	Max dev. 8.1 dB at 160 Hz		
	$C_{50-3150}$ = -8 dB	$C_{50-5000}$ = -7 dB	$C_{100-8000}$ = -3 dB
	$C_{8,500-150}$ = -19 dB	$C_{8,500-4000}$ = -19 dB	$C_{8,100-8000}$ = -10 dB

TESTED AT ONE OF THE UKAS ACCREDITED LABORATORIES BELOW

B.T.C (H-Ref on Graph)	
B.R.E	
AIRO	
S.R.L	

Customer: Metsec plc Hepsec Division

BTC 17568A: Page 9 of 11

